



City Council Work Session

Mechanic St. Pump Station Replacement

June 22, 2026



1

Agenda

1. Introductions
2. Background, Needs and Goals
3. Proposed Concept
4. Alternatives Evaluated
5. Public Greenspace Amenities and Site Enhancements
6. Timeline and Next Steps



2

Background

- Largest Wastewater Pump Station in System
- Conveys Flows to the Peirce Island WWTF
- Located at 113 Mechanic Street in the Historic South End
- Constructed in 1963 and Past its Useful Life
- Recent Pump Failures



 Underwood Engineers **AECOM**

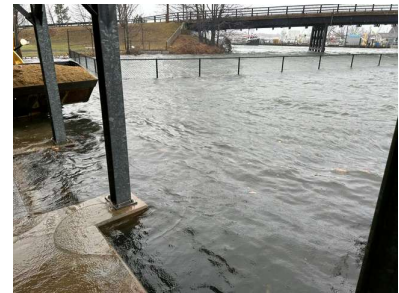
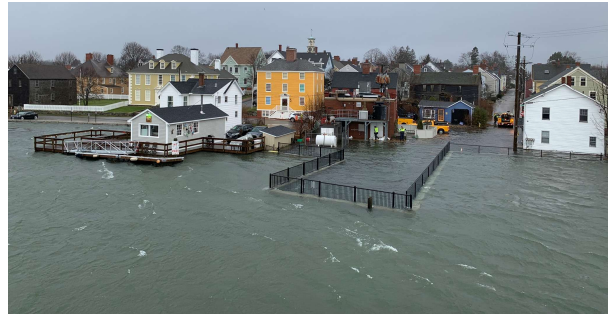
Mechanic St. Pump Station Replacement

3

3

Project Need and Goals

- Replace Pump Station for Improved Reliability
- Meet Current Design and Operation Standards
- Integrate the Station into its Surroundings
- Protect and Plan for Sea Level Rise and Flooding Protection

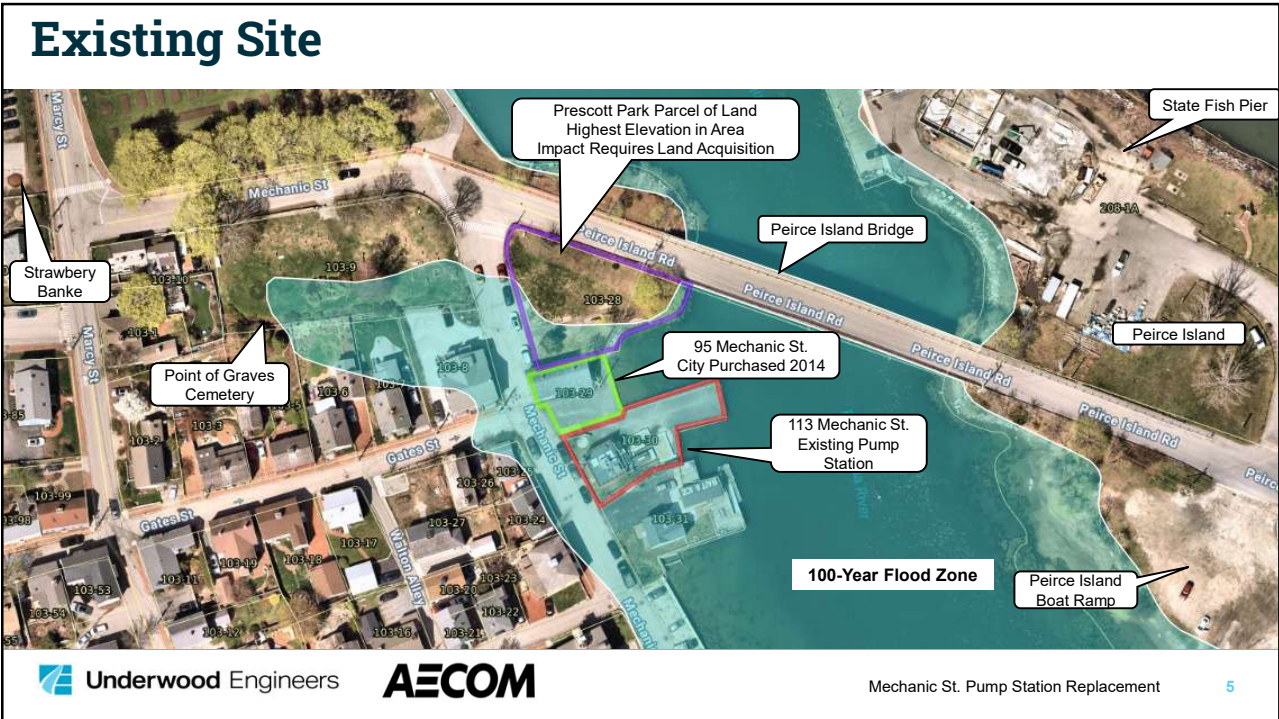


 Underwood Engineers **AECOM**

Mechanic St. Pump Station Replacement

4

4



5



6

Proposed Concept Rendering

Prescott Park toward Mechanic St



Preliminary – for Illustrative Purposes Only. Full Mature Plantings Depicted.

 Underwood Engineers **AECOM**

Mechanic St. Pump Station Replacement 7

7

Proposed Concept Rendering

Mechanic St toward Peirce Island Rd



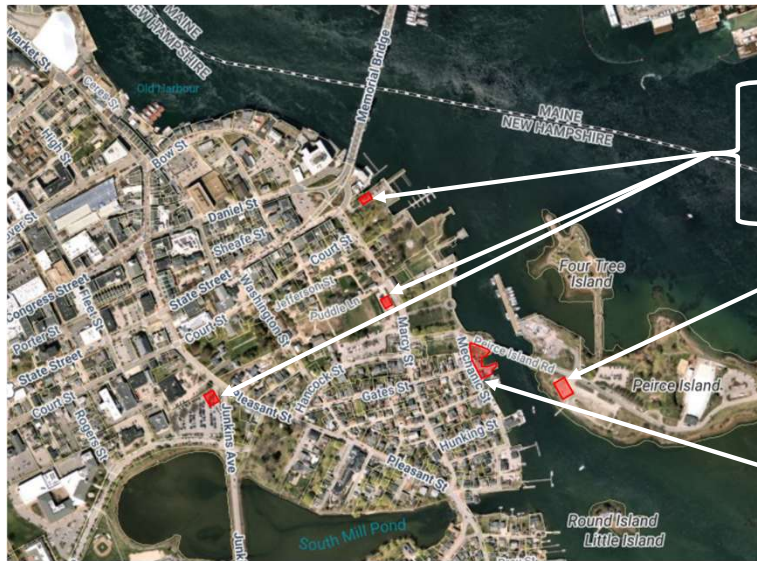
Preliminary – for Illustrative Purposes Only. Full Mature Plantings Depicted.

 Underwood Engineers **AECOM**

Mechanic St. Pump Station Replacement 8

8

Alternatives Evaluated: Overall Summary



Alternative	Proposed Locations	Options Considered
Relocation towards Downtown	One of 3 Parking Lots (Puddle Dock, Memorial Bridge, or Parrott Ave)	• 3 sub-options
Relocate Pump Station to Peirce Island	New station on Peirce Island via Underwater Pipe Tunnel	• 2 sub-options
New Pump Station at Existing Site	113 Mechanic St. & 95 Mechanic St. & Prescott Park parcel	• 3 sub-options to reuse existing infrastructure • 4 sub-options for new pump station

9

Relocation towards Downtown

All Options Result in:

- Permanent loss of parking
- Major sewer system overhaul
- Neighborhood disruptions
- Mechanic St. Pump Station still required for reduced service area

Not Recommended



10

Relocate Pump Station to Peirce Island

- Directional Drilling Not Feasible
 - Challenging soil and rock conditions
- Micro-tunnel Cost Prohibitive
 - Deep drop shafts (~80-ft)
 - Sewer reconfiguration
 - Elevated odor control facilities
 - Ventilation facilities
 - Challenging construction
 - Additional maintenance needs

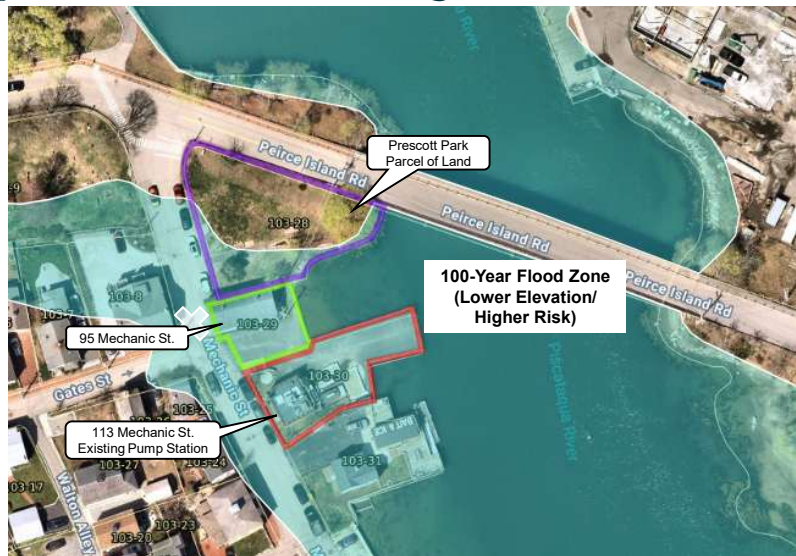


Not Recommended

11

Evaluate New Pump Station at Existing Site

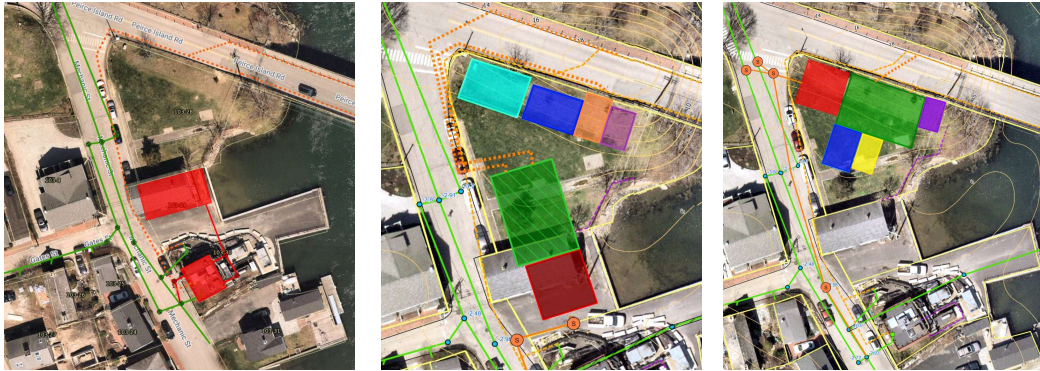
- Available area for new infrastructure
- Uses configuration of existing sewer collection system
- Existing pump station and 95 Mechanic St. in 100-Year Flood Zone (higher risk)
 - Low area of site – need elevated buildings or other flood protections
- Prescott Park parcel (lower risk)
 - Higher-ground elevation for above ground building



12

Existing Site Alternatives Investigated

- Reuse Existing Infrastructure
- New Configuration Above and Below Grade
- New Configuration Above Grade
- Optimize Site for Public Benefit



13

Alternative A – Reuse Existing Infrastructure



Preliminary - for Illustrative Purposes Only



14

Proposed Concept

- Connection to Prescott Park and Point of Graves Cemetery
- Improved Intersection Safety
- New Pump Station Control Building
- New Pump Station (Below Grade)
- Public Greenspace and Amenities



Underwood Engineers

AECOM

Mechanic St. Pump Station Replacement

17

17

Proposed Concept Rendering

Prescott Park toward Mechanic St



Preliminary – for Illustrative Purposes Only. Full Mature Plantings Depicted.

Underwood Engineers

AECOM

Mechanic St. Pump Station Replacement

18

18

Proposed Concept Rendering

Mechanic St toward Peirce Island Rd

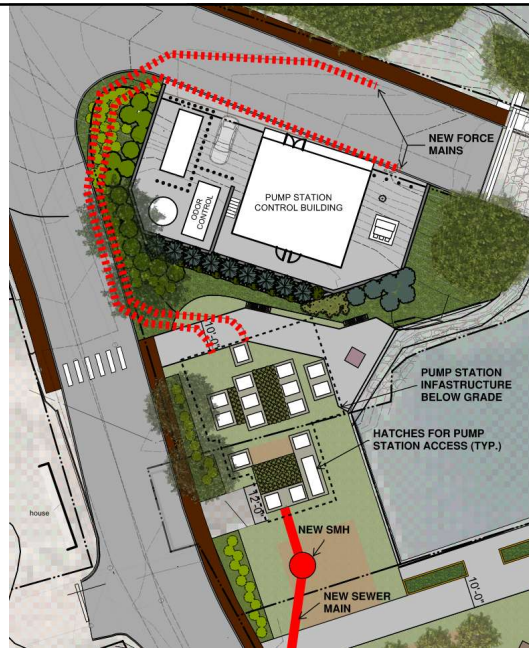


Preliminary – for Illustrative Purposes Only. Full Mature Plantings Depicted.

19

Conceptual Pump Station

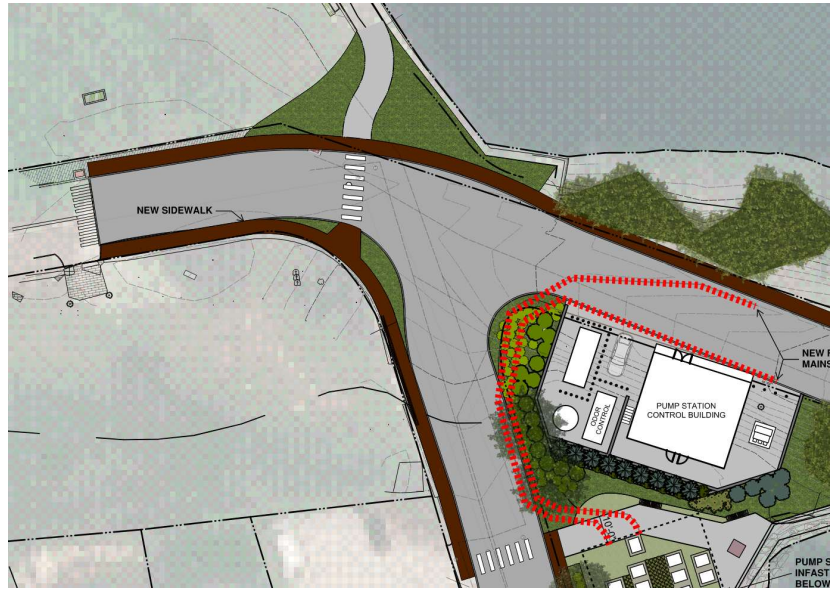
- Below Grade Pump Station
- Control Building
- Support Equipment
- Landscape Features
 - Retaining walls
 - Terraced plantings
 - Greenery to shroud exterior equipment



20

Conceptual Intersection Improvements

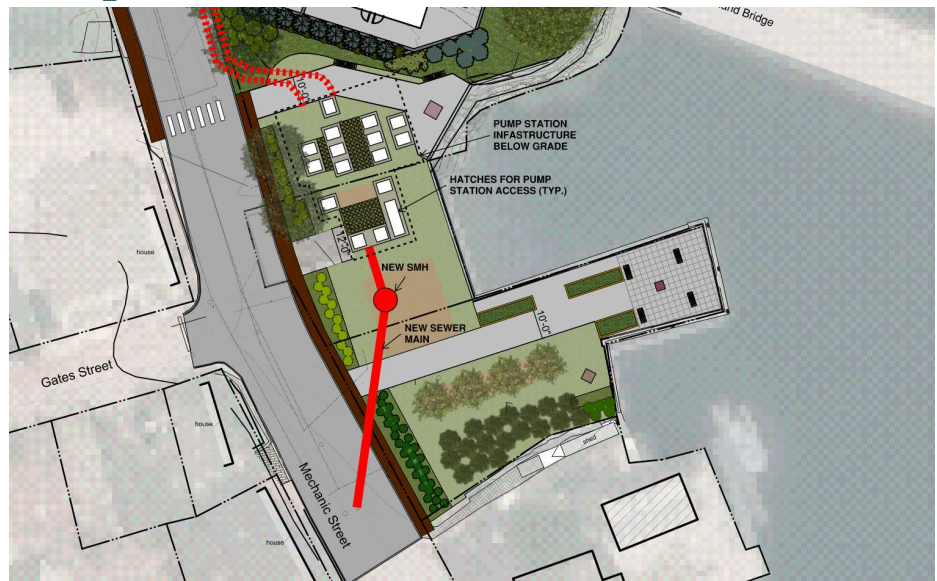
- Safety Improvements
- Revised Pedestrian Pathways
- Additional Sidewalks
- Intersection Alignment Adjustment
- Access to New Greenspace



21

Conceptual Greenspace

- Seating
- Walking Pathways
- Art Opportunities
- Plantings
- Greenery



22

Timeline

- May 2026: Feasibility analysis completed
- May – June 2026: FY27 Capital Improvement Plan
- June 2026: CWSRF Pre Application
- June 2026: Begin Discussions with NH Charitable Division of Attorney General’s Office
- July 2026 – November 2026: Public Outreach Process
- July 2026 – January 2027: Preliminary Design and Updated Cost Opinion
- February 2027 – October 2027: Final Design
- February 2028 – September 2029: Construction

Next Steps

1. Incorporate Feedback From this City Council Work Session
2. Public Meetings (Two)
3. Online Option for Public Feedback
4. Presentation to PARC
5. Update on Public Input

DEPARTMENT OF PUBLIC WORKS

Operations Services Resources **Projects** MapGeo Contact Developments

City of Portsmouth > Public Works Home > Mechanic Street Pump Station Upgrade

MECHANIC STREET PUMP STATION UPGRADE

The City conducted a feasibility study kickoff meeting with the consultants and representatives from the New Hampshire Department of Environmental Services on September 10, 2024. At this point in the feasibility study, multiple future options are under consideration.

Background

The Mechanic Street Wastewater Pumping Station is the largest in the City. The City developed a **Pump Station Master Plan** to perform limited upgrades. Pump failures and flooding events required temporary pump installation and repairs in 2023 that underscore the need for a comprehensive replacement and upgrade program.

The City has contracted with the team of AECOM and Underwood Engineers to complete a feasibility study for a full facility replacement. The study is estimated to take 3-5 months (Aug-Dec 2024) to complete and will identify siting options and capacity needs for a new facility. The City anticipates to present concepts to the City Council and the community in early 2025 before moving forward with the project.

Project (EF-13-SD-97):

Project Status: Feasibility Study underway.

Estimated Cost: FY25 CIP Design Phase Costs: \$4 Million. FY27 Construction Phase Costs: \$21 Million.

Funding Source: The City is exploring State and Federal funding sources